

GEZE PATCH FITTINGS
CLAMPING BEARINGS FOR ALL-GLASS INSTALLATIONS

CONTENTS

Elegant solutions - versatile and easy to install	3
Overview door system types	4
Bottom patch GEZE PT 10	6
Floor pivot DL-FL and DL-RD	7
Top patch GEZE PT 20	8
Top pivot GEZE PT 24 and GEZE PT 21	9
Fanlight patch with pivot pin GEZE PT 30	10
Patch for fanlight and side panel GEZE PT 40	11
Patch for fanlight and side panel with reinforcement GEZE PT 41L / PT 41R	12
Centre lock GEZE US 50-FL and GEZE US 50-RD	13
Patch lock GEZE PL 50-FL and GEZE PL 50-RD	14
Bottom lock GEZE PL 55	15
Bottom lock, rounded GEZE PL 60	16
Double fanlight patch with reinforcement GEZE PT 51	17
Double strike box GEZE GK 20	18
Strike box GEZE GK 50	19
Connector patch with stop plate GEZE PT 62	20
Connector patch GEZE PT 63	21
Connector patch GEZE PT 70	22
Double fanlight patch GEZE PT 75	23
Connector patch GEZE PT 80	24
Connector patch with reinforcement GEZE PT 81	25
Connector patch for wall mounting GEZE PT 84	26
Connector patch for wall mounting GEZE PT 90	27
Fixed panel profile GEZE FP	28
GEZE products in combination with patch fittings	29
Floor spring GEZE TS 500 NV and TS 500 N EN3	30
Floor spring GEZE TS 550 NV	31

Elegant solutions – versatile and easy to install

GEZE Patch Fittings are versatile clamping bearings for interior and exterior all-glass installations. They distinguish themselves by their timelessly elegant and unobtrusive design. All visible parts are made of anodised aluminium or of satin respectively polished stainless steel with the finest structures on flat surfaces.

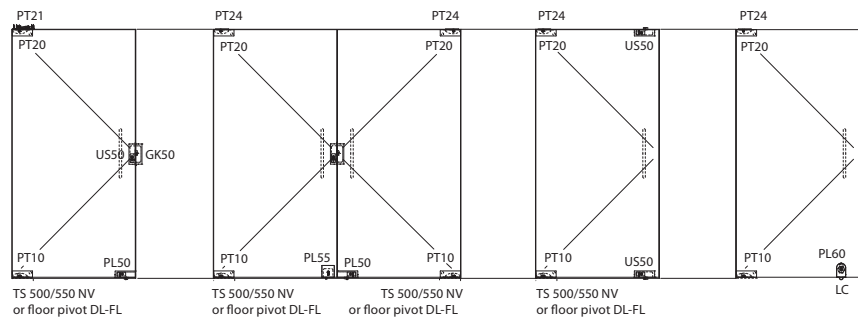
RANGE OF APPLICATION

For exterior installations	●
For interior installations	●
For double-action doors	●
For fixed partition walls and wall covering	●
Door leaf weight	max. 100 kg
Door leaf width	max. 1000 mm
Door leaf height	max. 2800 mm
Glass thickness	ESG (8) / 10 / 12 mm
Torque	screws M6 max. 15 Nm screws M8 max. 20 Nm

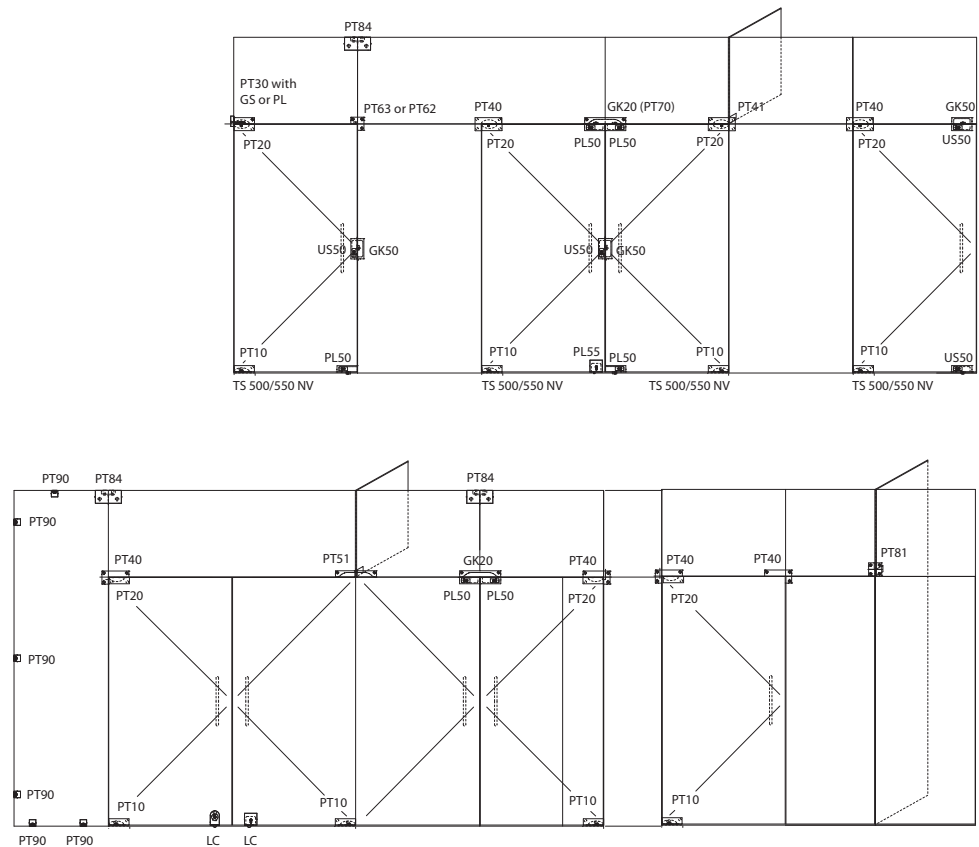
● = Patch Fittings useable

OVERVIEW

without fanlight

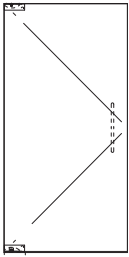


with fanlight

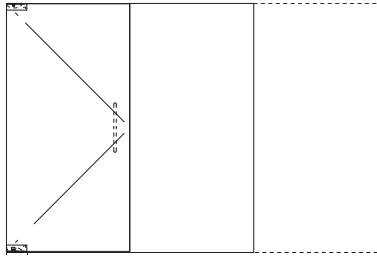


OVERVIEW DOOR SYSTEMS (WITHOUT FANLIGHT)

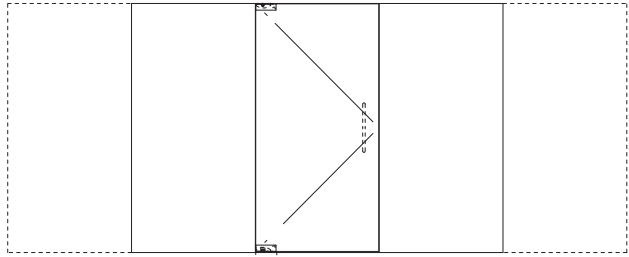
Type 1



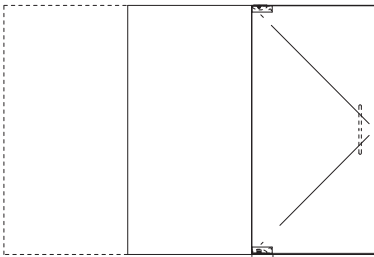
Type 2



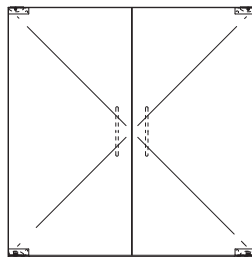
Type 4



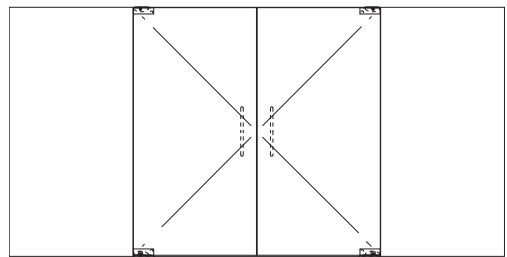
Type 3



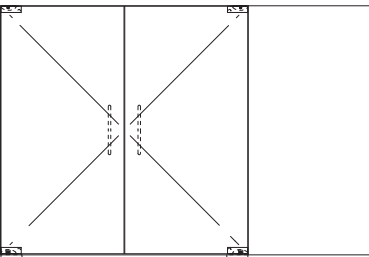
Type 14



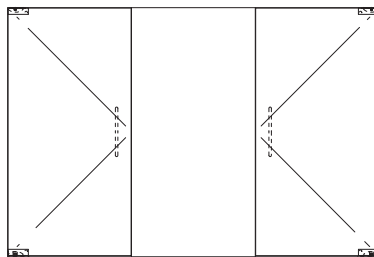
Type 17



Type 15

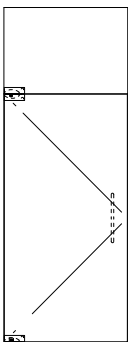


Type 16

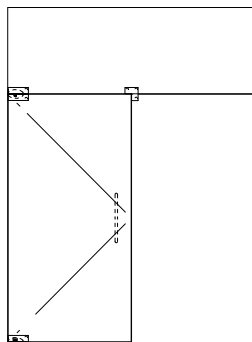


OVERVIEW DOOR SYSTEMS (WITH FANLIGHT)

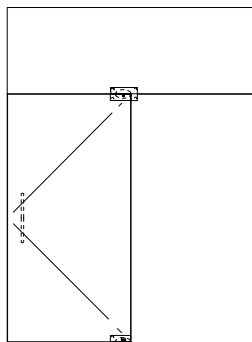
Type 5



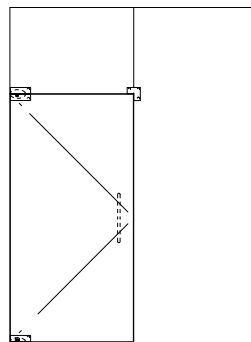
Type 6



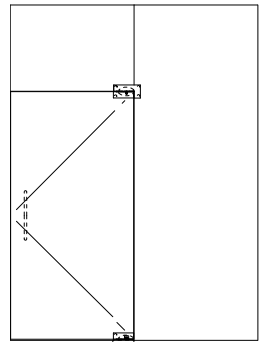
Type 7



Type 8

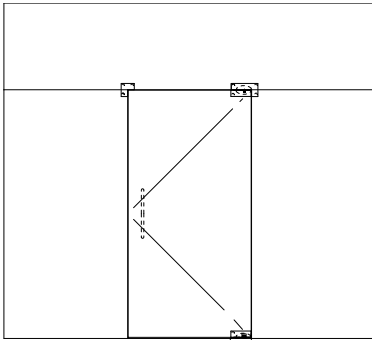


Type 9

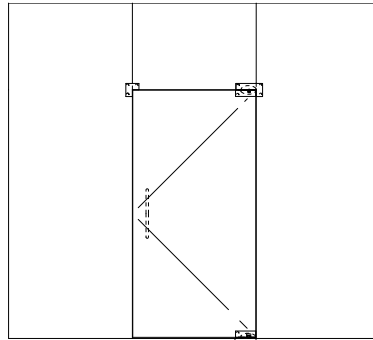


OVERVIEW DOOR SYSTEMS (WITH FANLIGHT)

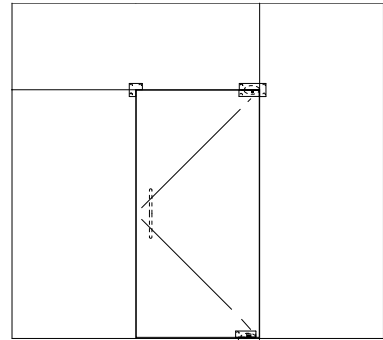
Type 10



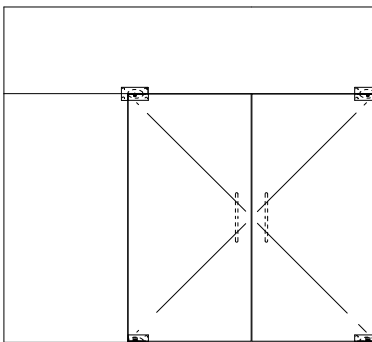
Type 11



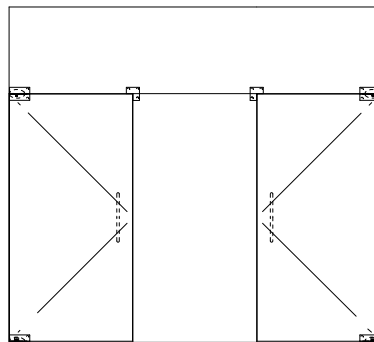
Type 12



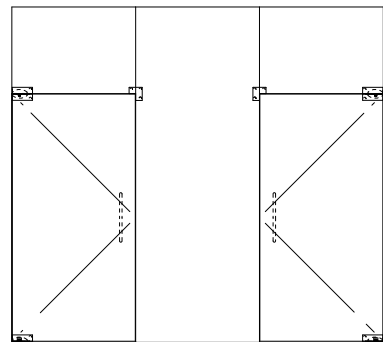
Type 19



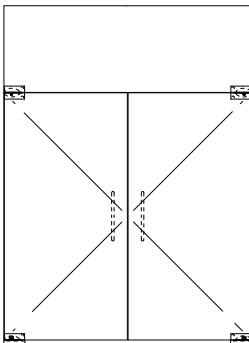
Type 20



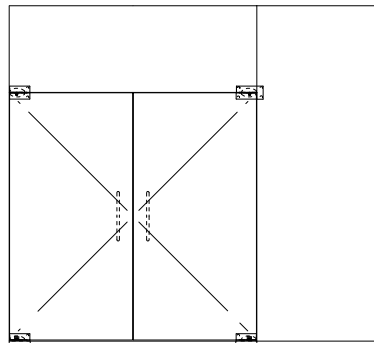
Type 20a



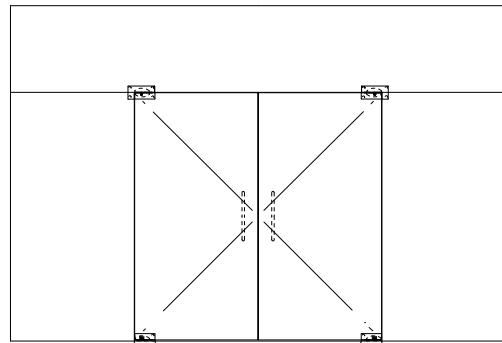
Type 18



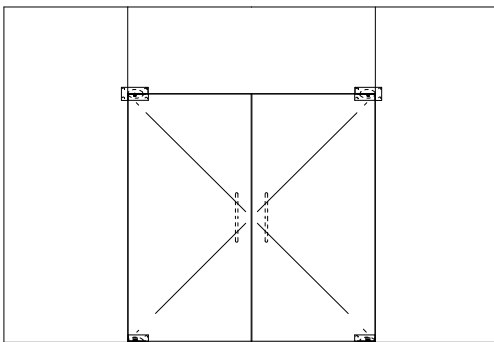
Type 21



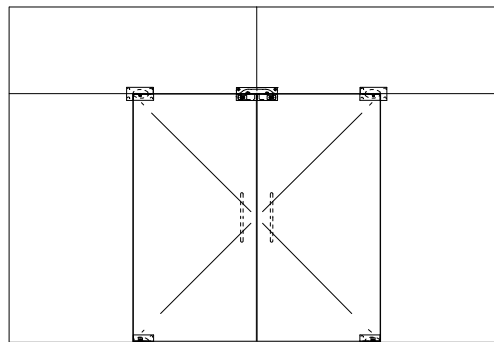
Type 22



Type 23



Type 24



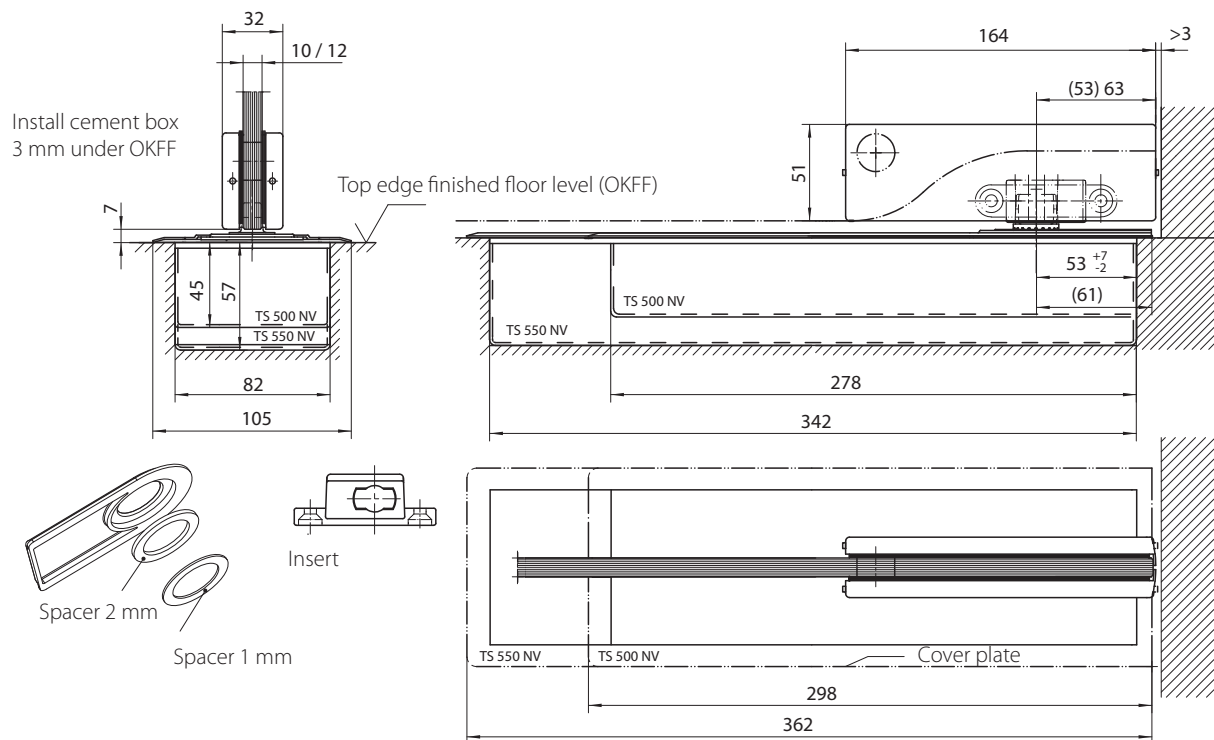
GEZE PATCH FITTINGS

Bottom patch GEZE PT 10

- connection to floor spring
- surface made of anodised aluminium, stainless steel satin or polished

GEZE PT 10

Drawing no. 91905-1-0100



Glass machining, see drawing no. 91905-9-0950

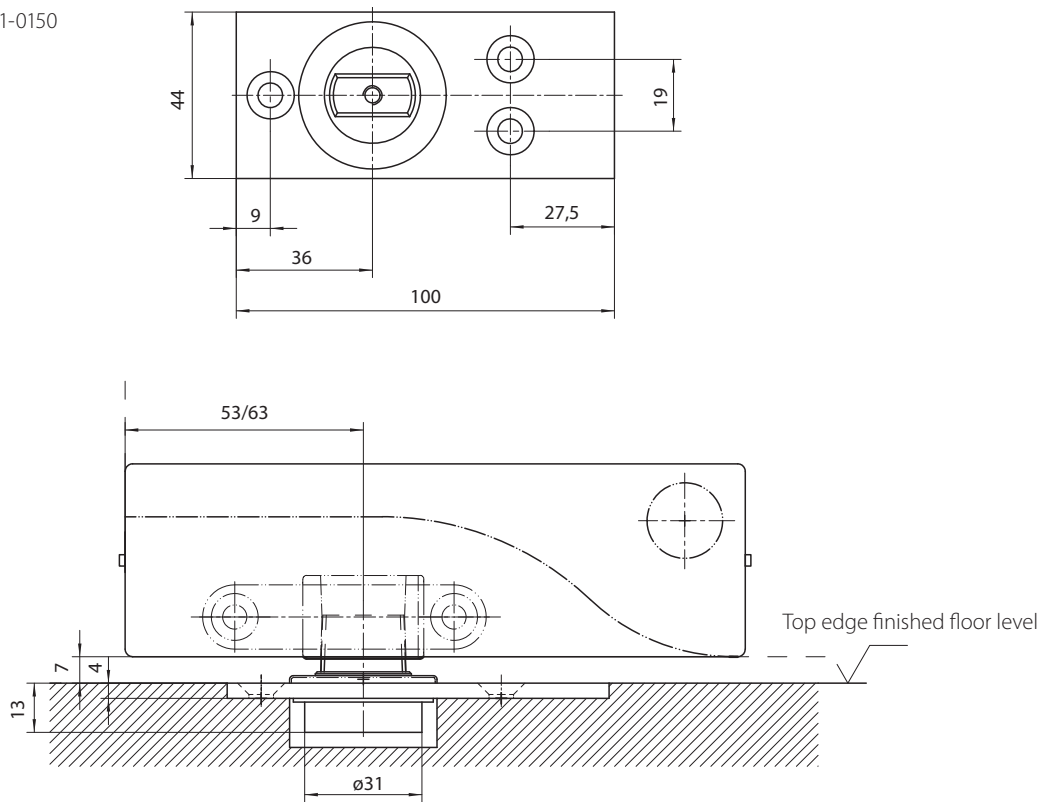
ORDERING INFORMATION

Identification	Finish	ID no.
Bottom patch GEZE PT 10	stainless steel satin	111458
	stainless steel polished	119869
	anodised aluminium	135070
Floor pivot DL-FL	galvanised steel	135393
Floor pivot DL-RD	galvanised steel	135555
Spacer set for use with TS 500/550 NV	plastic	135557
Additional shim IL 10/20/30 for 8 mm glass		135077

Floor pivot DL-FL

- to use with GEZE PT 10
- door leaf weight max. 150 kg

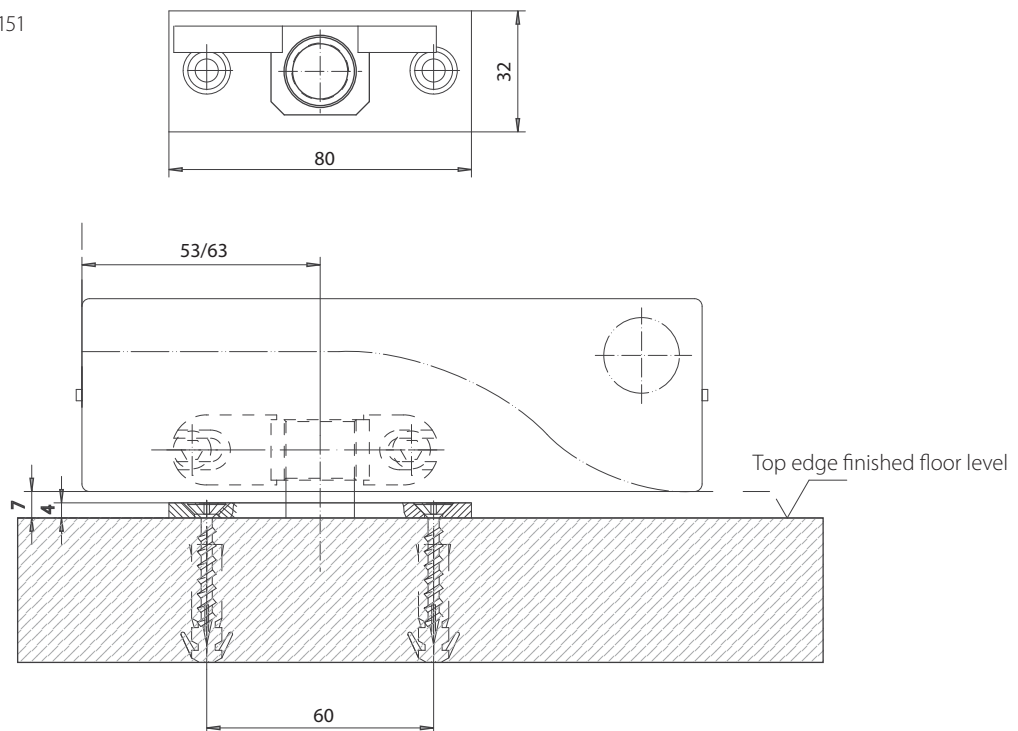
Drawing no. 91905-1-0150



Floor pivot DL-RD

- to use with GEZE PT 10
- door leaf weight max. 80 kg

Drawing no. 91905-1-0151



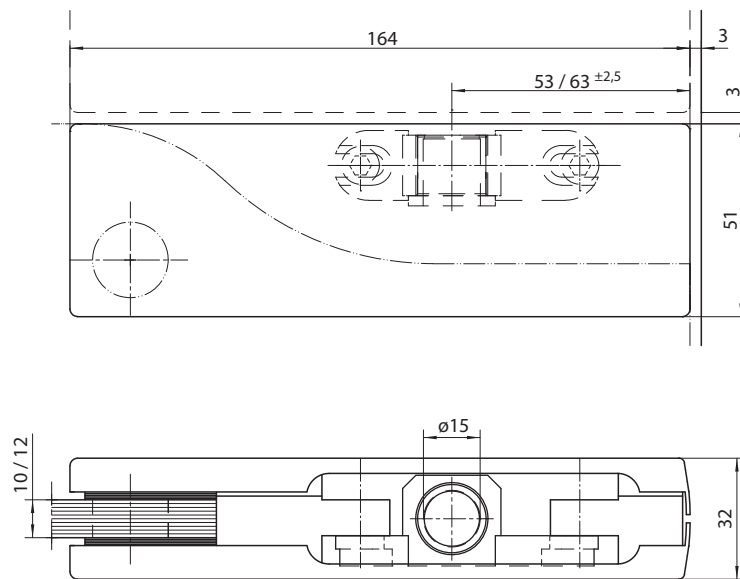
Top patch GEZE PT 20

- connection to PT 24 (upper pivot point) or TP 30 and PT 40
- surface made of anodised aluminium, stainless steel satin or polished

GEZE PT 20



Drawing no. 91905-1-0101



Glass machining, see drawing no. 91905-9-0950

ORDERING INFORMATION

Identification	Finish	ID no.
Top patch GEZE PT 20	stainless steel satin	111459
	stainless steel polished	119870
	anodised aluminium	135081
Additional shim IL 10/20/30 for 8 mm glass		135077

Top pivot GEZE PT 24 and GEZE PT 21

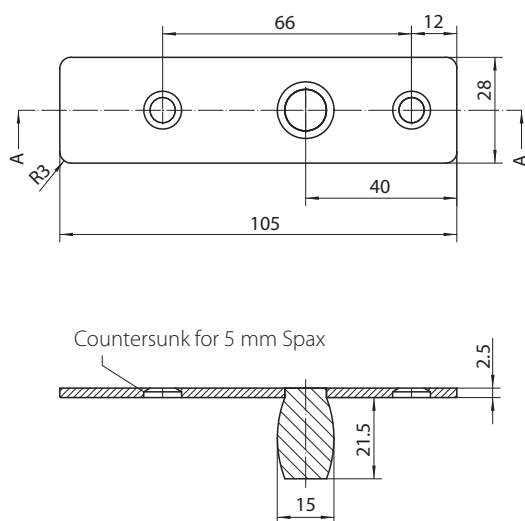
- top pivot with fixing plate for doors without fanlight GEZE PT 24
- top pivot (pivot top TS 136/O Stop 360 V) for doors without fanlight GEZE PT 21

GEZE PT 24



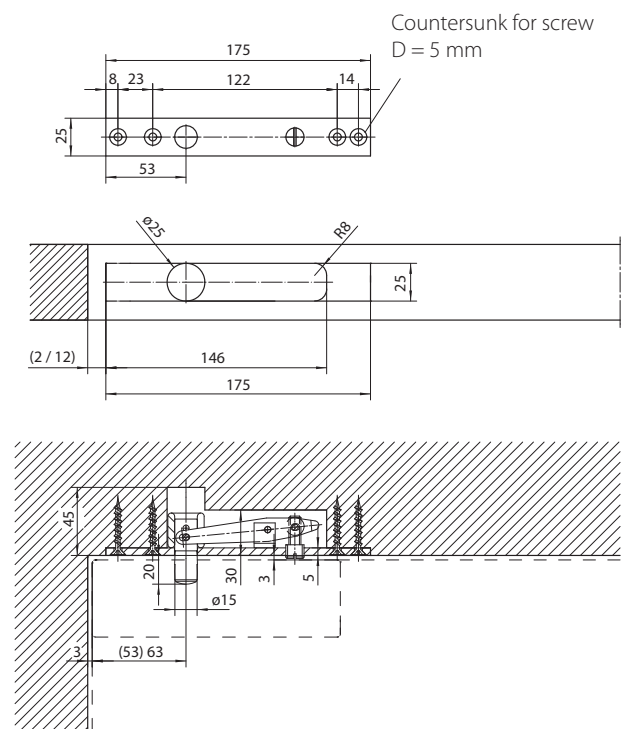
GEZE PT 24

Drawing no. 91905-1-0103



GEZE PT 21

Drawing no. 91905-1-0102



ORDERING INFORMATION

Identification	Finish	ID no.
Top pivot GEZE PT 24	stainless steel	111460
Top pivot GEZE PT 21	galvanised steel	010739

GEZE PATCH FITTINGS

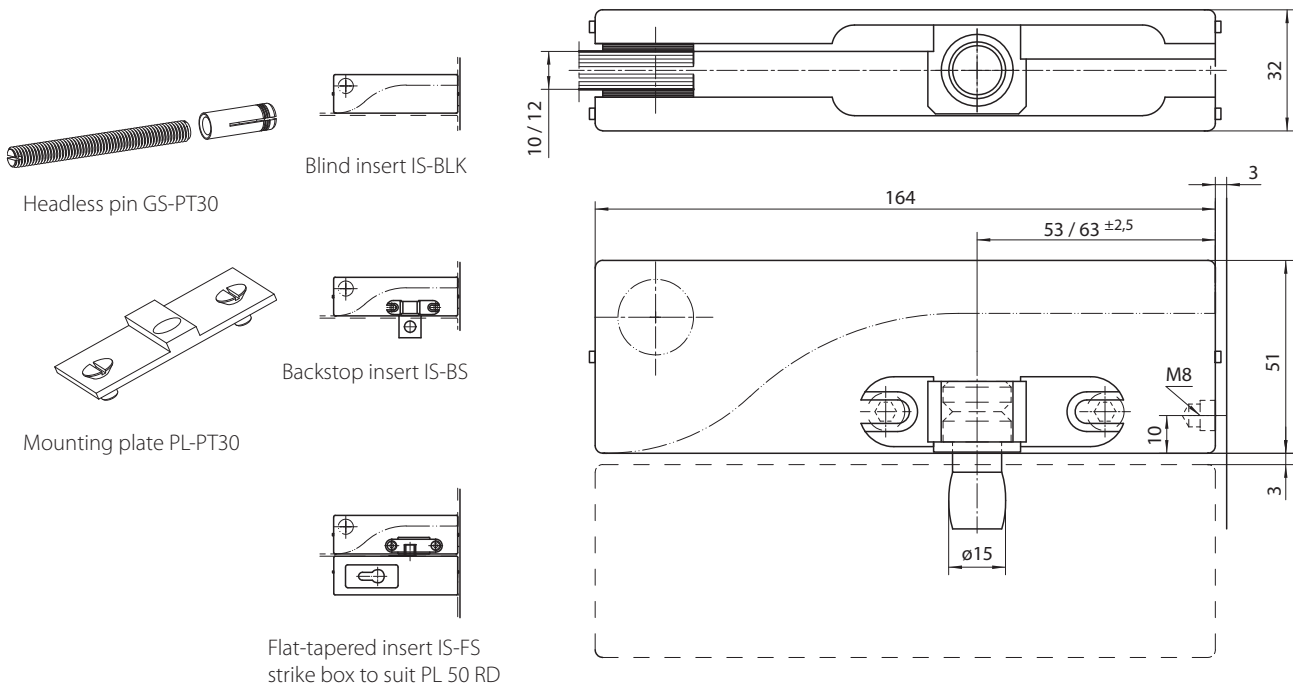
Fanlight patch with pivot pin GEZE PT 30

- fanlight patch for wall fixing
- surface made of anodised aluminium, stainless steel satin or polished

GEZE PT 30



Drawing no. 91905-1-0104



Glass machining, see drawing no. 91905-9-0950

ORDERING INFORMATION

Identification	Finish	ID no.
Fanlight patch with pivot GEZE PT 30	stainless steel satin	111461
	stainless steel polished	119881
	anodised aluminium	135082
Blind insert IS-BLK	stainless steel satin	135349
	stainless steel polished	135106
	anodised aluminium	135350
Backstop insert IS-BS	steel	135105
Headless pin GS-PT30	steel	135103
Mounting plate PL-PT30	stainless steel	135104
Additional shim IL 10/20/30 for 8 mm glass		135077

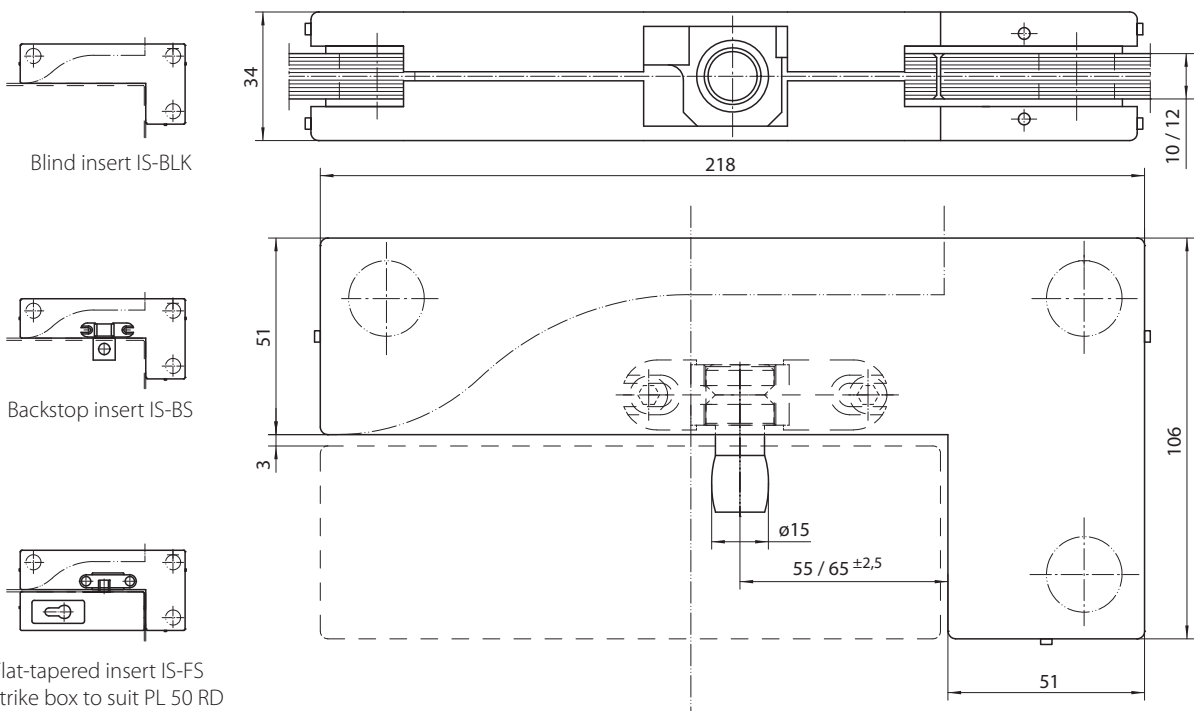
Patch for fanlight and side panel GEZE PT 40

- top pivot with connection to the fanlight and lateral fixed panel
- surface made of anodised aluminium, stainless steel satin or polished

GEZE PT 40



Drawing no. 91905-1-0106



Glass machining, see drawing no. 91905-9-0951

ORDERING INFORMATION

Identification	Finish	ID no.
Patch for fanlight and side panel GEZE PT 40	stainless steel satin	111462
	stainless steel polished	119882
	anodised aluminium	135083
Blind insert IS-BLK	stainless steel satin	135349
	stainless steel polished	135106
	anodised aluminium	135350
Backstop insert IS-BS	steel	135105
Additional shim IL 40 for 8 mm glass		135078

GEZE PATCH FITTINGS

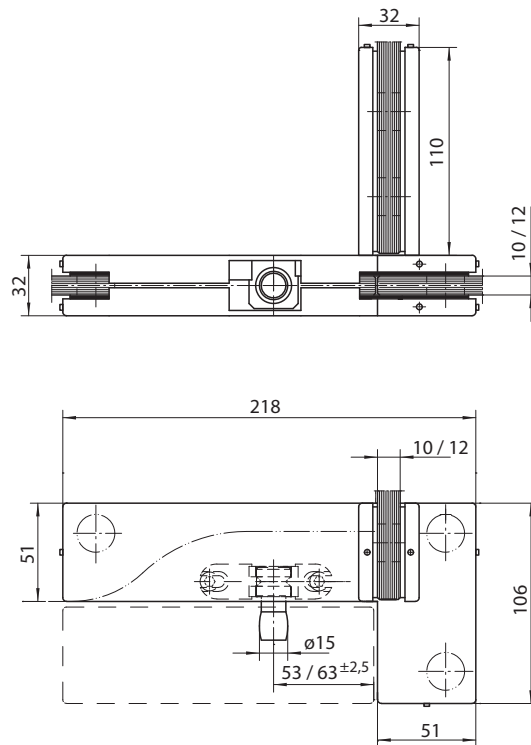
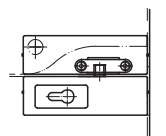
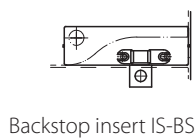
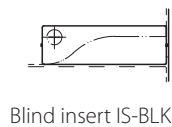
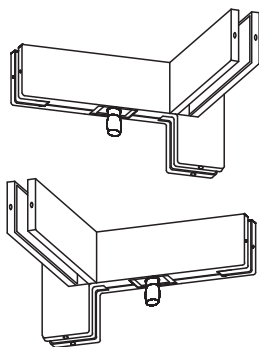
Patch for fanlight and side panel with reinforcement GEZE PT 41L / PT 41R

- patch for fanlight and side panel / reinforcement left or right
- surface made of anodised aluminium, stainless steel satin or polished

GEZE PT 41L / PT 41R



Drawing no. 91905-1-0107



GEZE PT 41L with reinforcement left as displayed and GEZE PT 41R with reinforcement right laterally reversed

Glass machining, see drawing no. 91905-9-0952

ORDERING INFORMATION

Identification	Finish	ID no.
Patch for fanlight and side panel with reinforcement left GEZE PT 41L	stainless steel satin	124158
	stainless steel polished	124159
	anodised aluminium	135085
Patch for fanlight and side panel with reinforcement right GEZE PT 41R	stainless steel satin	124160
	stainless steel polished	124161
	anodised aluminium	135084
Blind insert IS-BLK	stainless steel satin	135349
	stainless steel polished	135106
	anodised aluminium	135350
Backstop insert IS-BS	steel	135105
Additional shim IL 41 for 8 mm glass		135079

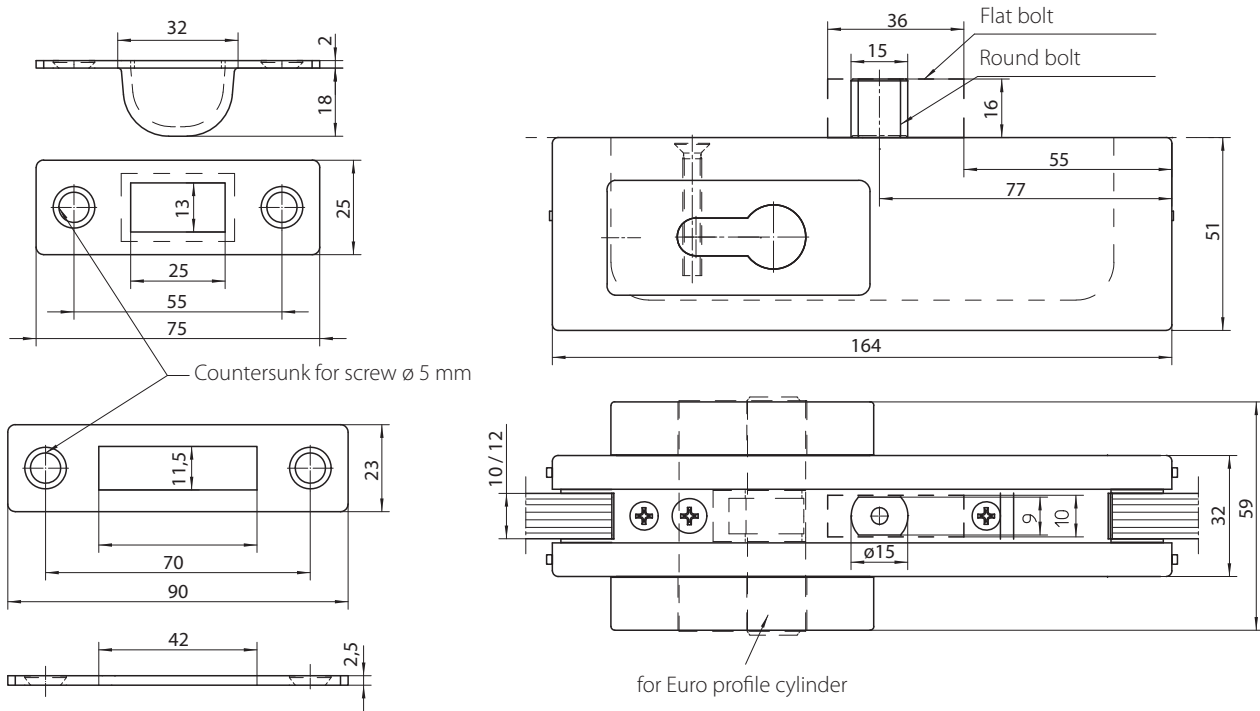
Centre lock GEZE US 50-FL and GEZE US 50-RD

- centre lock without cylinder, with flat bolt (version US 50-FL) or with round bolt (version US 50-RD)
- surface made of anodised aluminium, stainless steel satin or polished

GEZE US 50



Drawing no. 91905-1-0122



Glass machining, see drawing no. 91905-9-0962

ORDERING INFORMATION

Identification	Finish	ID no.
Centre lock with flat bolt GEZE US 50-FL	stainless steel satin	111464
	stainless steel polished	119884
	anodised aluminium	135101
Centre lock with round bolt GEZE US 50-RD	stainless steel satin	124152
	stainless steel polished	124153
	anodised aluminium	135102
Latch catch LC	stainless steel satin	124156
	stainless steel polished	124157
Flat latch catch SB	stainless steel satin	124942
	stainless steel polished	124943
Additional shim IL 50 for 8 mm glass		135149

GEZE PATCH FITTINGS

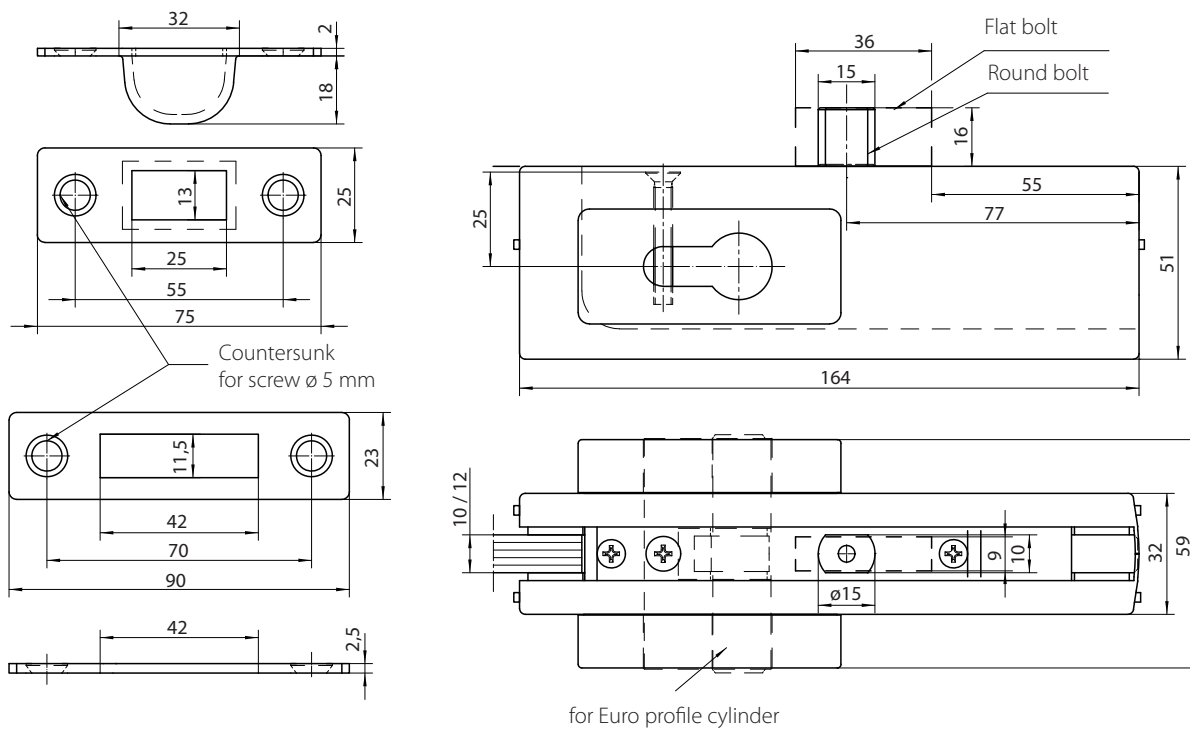
Patch lock GEZE PL 50-FL and GEZE PL 50-RD

- patch lock without cylinder, with flat bolt (version PL 50-FL) or with round bolt (version PL 50-RD)
- surface made of anodised aluminium, stainless steel satin or polished

GEZE PL 50



Drawing no. 91905-1-0117



Glass machining, see drawing no. 91905-9-0963

ORDERING INFORMATION

Identification	Finish	ID no.
Patch lock with flat bolt GEZE PL 50-FL	stainless steel satin	111465
	stainless steel polished	119885
	anodised aluminium	135095
Patch lock with round bolt GEZE PL 50-RD	stainless steel satin	124154
	stainless steel polished	124155
	anodised aluminium	135096
Latch catch LC	stainless steel satin	124156
	stainless steel polished	124157
Flat latch catch SB	stainless steel satin	124942
	stainless steel polished	124943
Additional shim IG PL 50 for 8 mm glass		135149

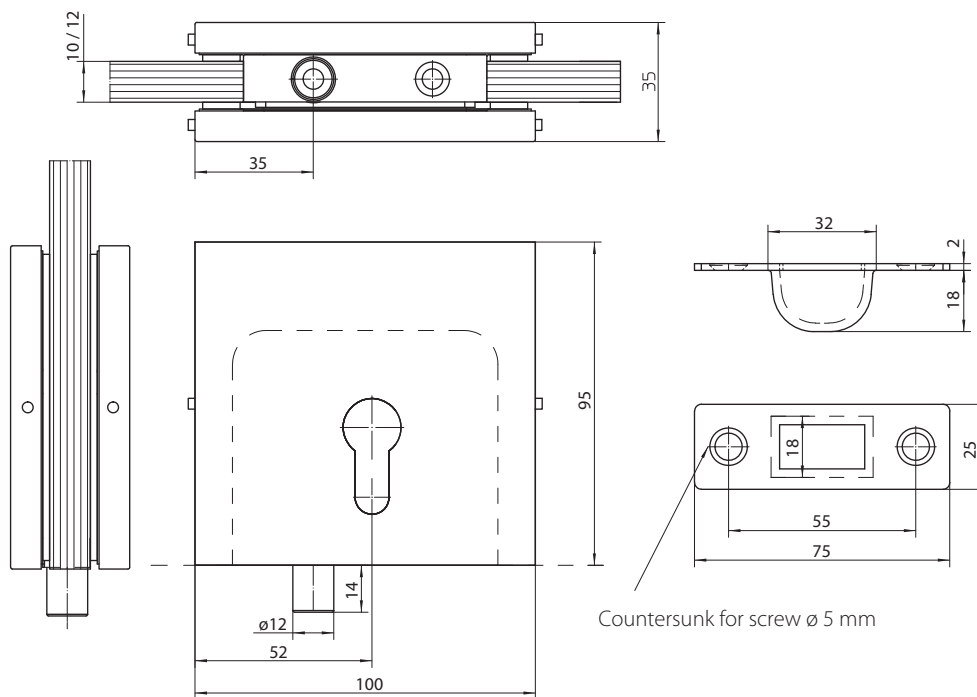
Bottom lock GEZE PL 55

- bottom lock with round bolt
- Surface made of anodised aluminium, stainless steel satin or polished

GEZE PL 55



Drawing no. 91905-1-0118



Glass machining, see drawing no. 91905-9-0964

ORDERING INFORMATION

Identification	Finish	ID no.
Bottom lock with round bolt GEZE PL 55	stainless steel satin	127829
	stainless steel polished	127827
	anodised aluminium	135097
Latch catch LC	stainless steel satin	124156
	stainless steel polished	124157
Additional shim IL 55 for 8 mm glass		135151

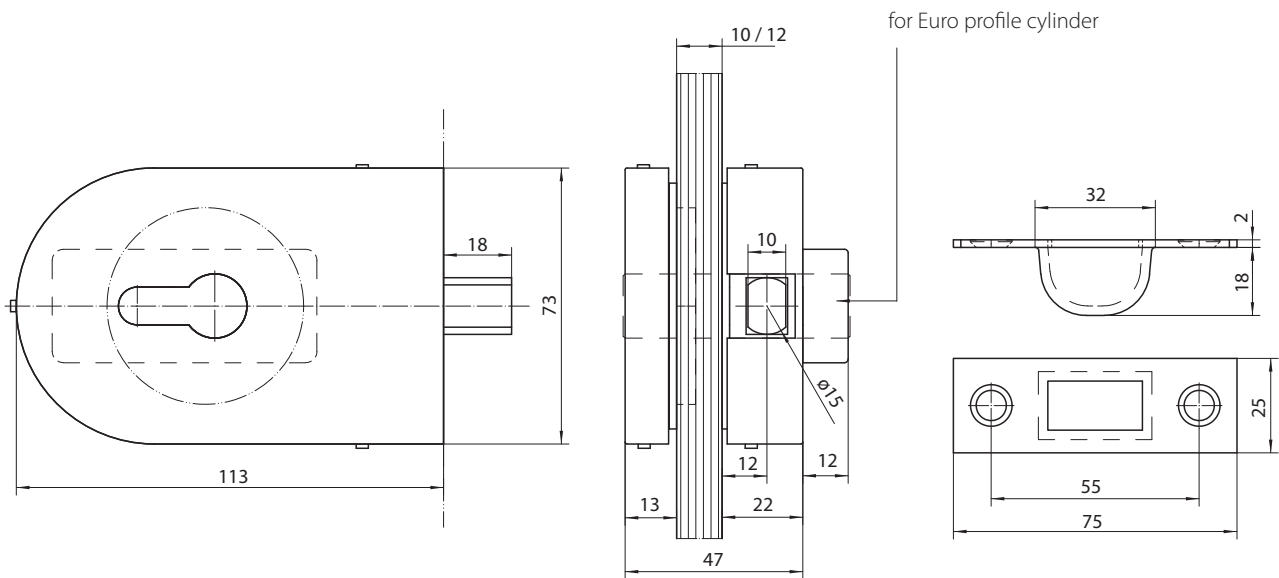
Bottom lock, rounded GEZE PL 60

- bottom lock, rounded, without cylinder
- surface made of anodised aluminium, stainless steel satin or polished

GEZE PL 60



Drawing no. 91905-1-0119



Glass machining, see drawing no. 91905-9-0963

ORDERING INFORMATION

Identification	Finish	ID no.
Bottom lock, rounded GEZE PL 60	stainless steel satin	127830
	stainless steel polished	127851
	anodised aluminium	135098
Latch catch LC	stainless steel satin	124156
	stainless steel polished	124157
Additional shim IL 60 for 8 mm glass		135152

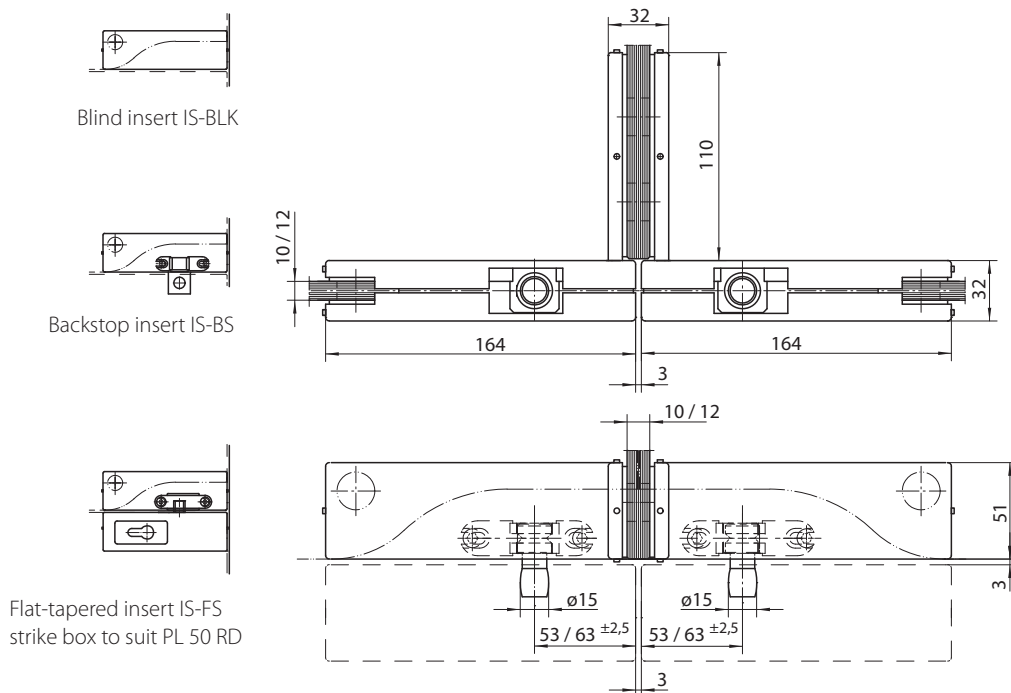
Double fanlight patch with reinforcement GEZE PT 51

- double fanlight patch with two pivot pins (D=15mm) and reinforcement on one side
- surface made of anodised aluminium, stainless steel satin or polished

GEZE PT 51



Drawing no. 91905-1-0108



Glass machining, see drawing no. 91905-9-0953

ORDERING INFORMATION

Identification	Finish	ID no.
Double fanlight patch with reinforcement GEZE PT 51	stainless steel satin	127279
	stainless steel polished	127280
	anodised aluminium	135086
Blind insert IS-BLK	stainless steel satin	135349
	stainless steel polished	135106
Backstop insert IS-BS	anodised aluminium	135350
	steel	135105
Additional shim IL 51 for 8 mm glass		135080

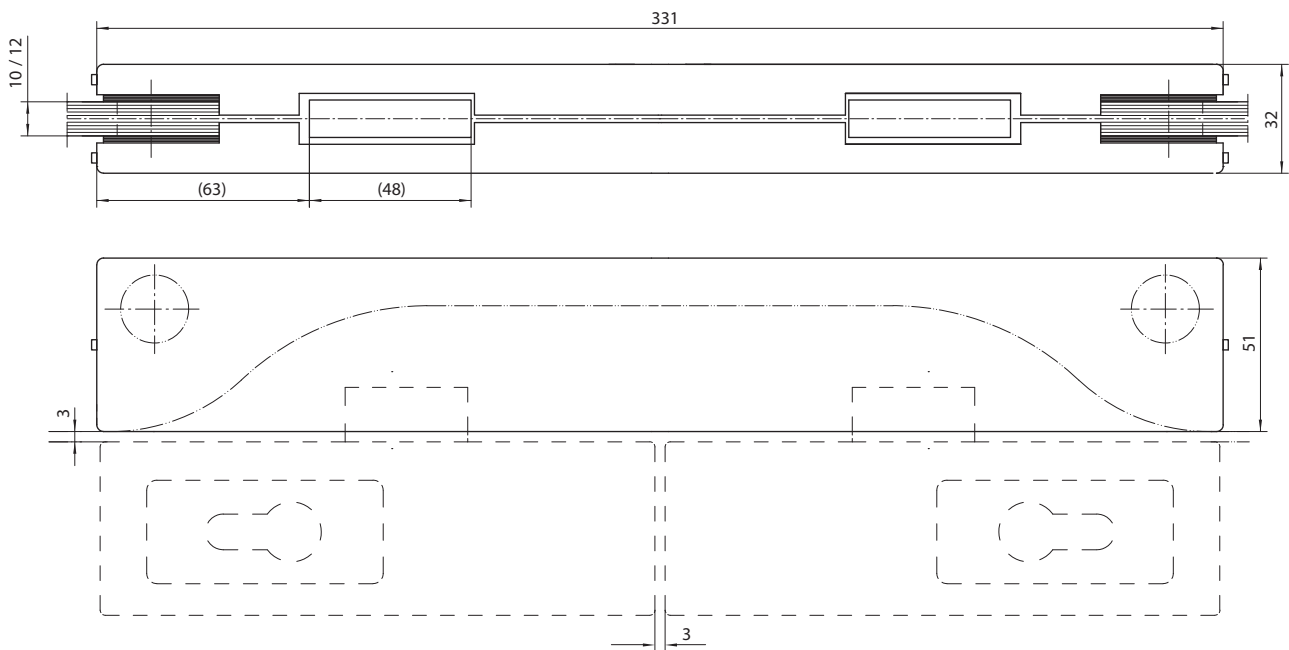
Double strike box GEZE GK 20

- double strike box
- surface made of anodised aluminium, stainless steel satin or polished

GEZE GK 20



Drawing no. 91905-1-0120



Glass machining, see drawing no. 91905-9-0957

ORDERING INFORMATION

Identification	Finish	ID no.
Double strike box GEZE GK 20	stainless steel satin	111467
	stainless steel polished	119886
	anodised aluminium	135099
Additional shim IL 75/20 for 8 mm glass		135144

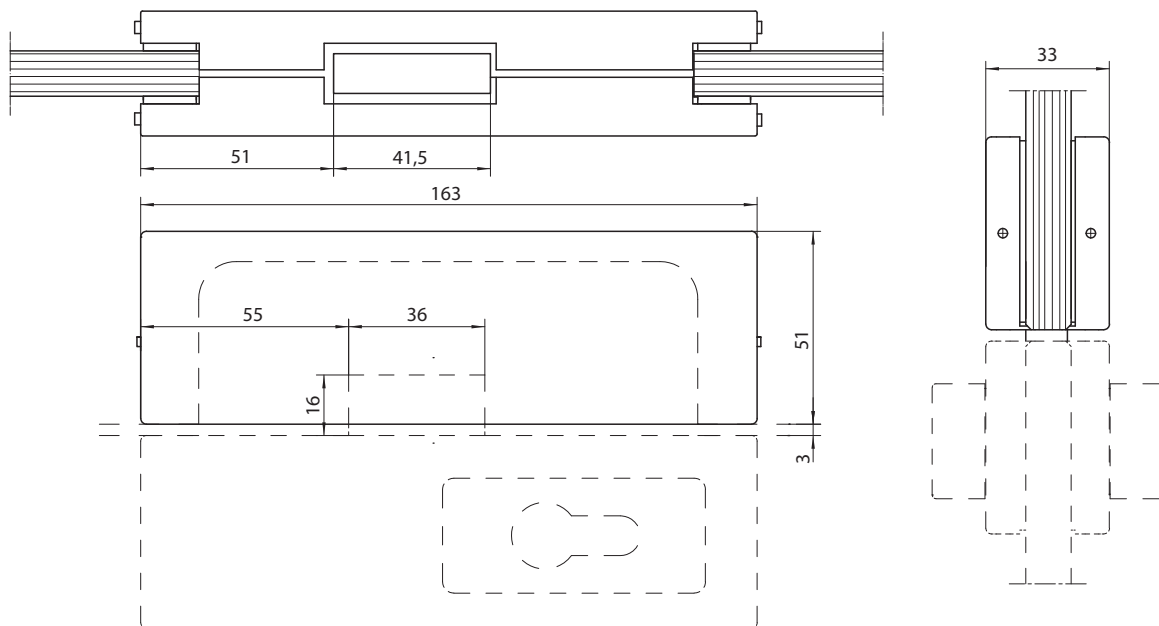
Strike box GEZE GK 50

- strike box
- surface made of anodised aluminium, stainless steel satin or polished

GEZE GK 50



Drawing no. 91905-1-0121



Glass machining, see drawing no. 91905-9-0962

ORDERING INFORMATION

Identification	Finish	ID no.
Strike box GEZE GK 50	stainless steel satin	111463
	stainless steel polished	119883
	anodised aluminium	135100
Additional shim IL 50 for 8 mm glass		135149

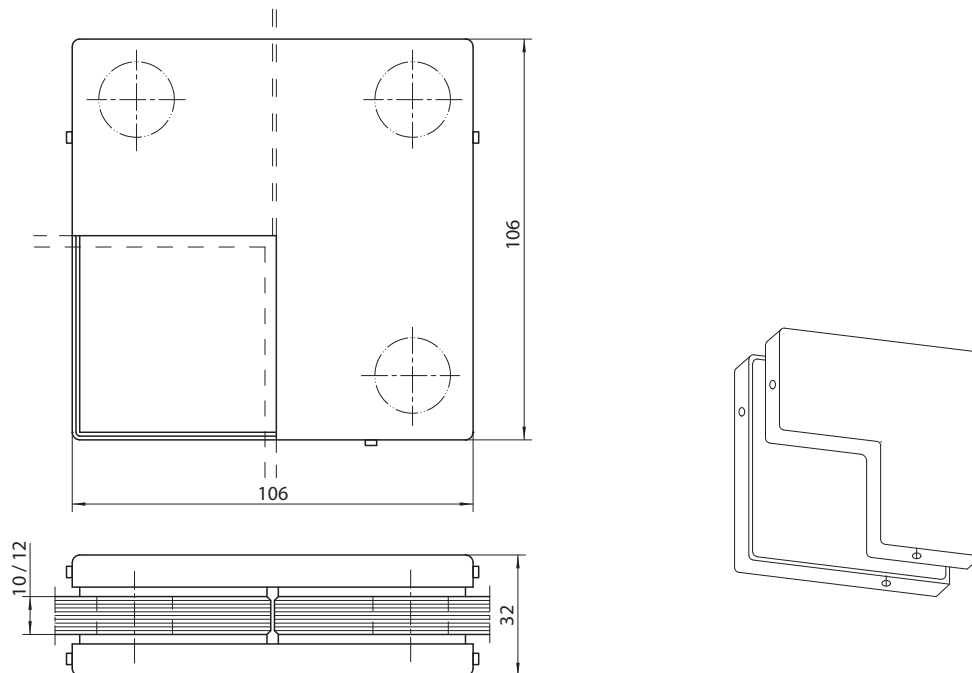
Connector patch with stop plate GEZE PT 62

- connector patch with stop plate
- surface made of anodised aluminium, stainless steel satin or polished

GEZE PT 62



Drawing no. 91905-1-0109



Glass machining, see drawing no. 91905-9-0954

ORDERING INFORMATION

Identification	Finish	ID no.
Connector patch with stop plate GEZE PT 62	stainless steel satin	127229
	stainless steel polished	127276
	anodised aluminium	135087
Additional shim IL 62 for 8 mm glass		135141

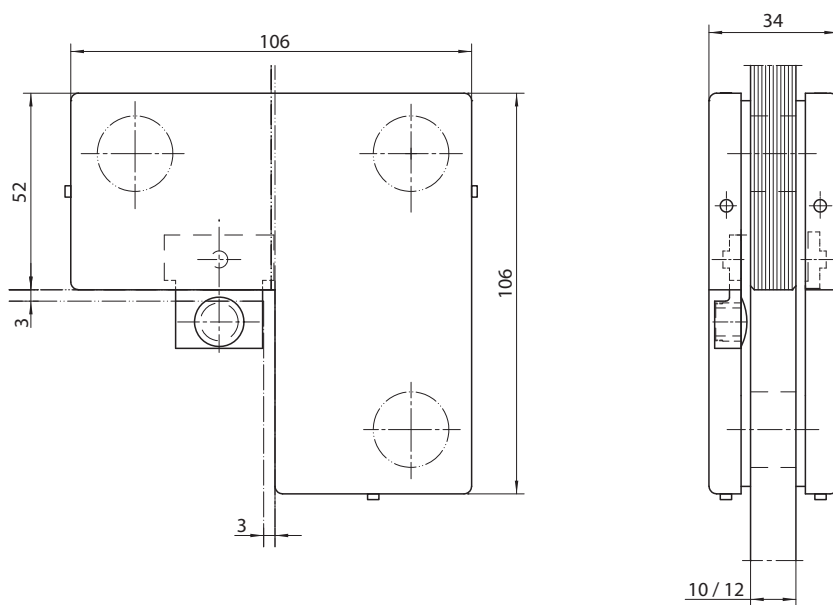
Connector patch GEZE PT 63

- connection fixed panel/fanlight
- surface made of anodised aluminium, stainless steel satin or polished

GEZE PT 63



Drawing no. 91905-1-0110



Glass machining, see drawing no. 91905-9-0954

ORDERING INFORMATION

Identification	Finish	ID no.
Connector patch GEZE PT 63	stainless steel satin	111469
	stainless steel polished	119887
	anodised aluminium	135088
Additional shim IL 63 for 8 mm glass		135142

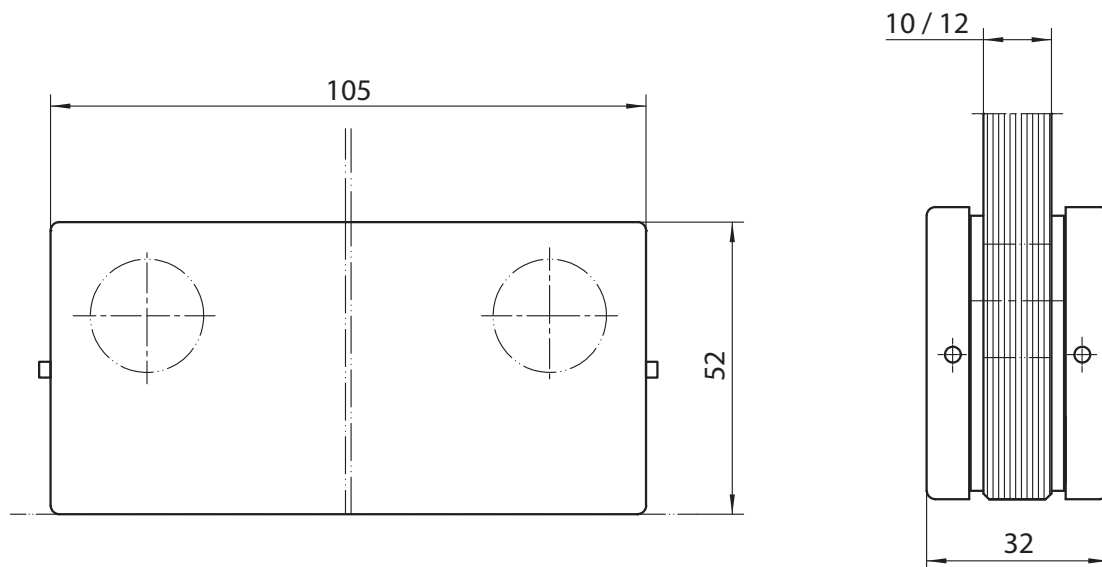
Connector patch GEZE PT 70

- connection (fanlight/twofold)
- surface made of anodised aluminium, stainless steel satin or polished

GEZE PT 70



Drawing no. 91905-1-0111



Glass machining, see drawing no. 91905-9-0956

ORDERING INFORMATION

Identification	Finish	ID no.
Connector patch GEZE PT 70	stainless steel satin	111471
	stainless steel polished	119889
	anodised aluminium	135089
Additional shim IL 70 for 8 mm glass		135143

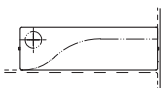
Double fanlight patch GEZE PT 75

- double fanlight patch with two pivot pins (D=15mm), without reinforcement
- surface made of anodised aluminium, stainless steel satin or polished

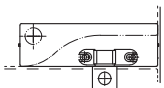
GEZE PT 75



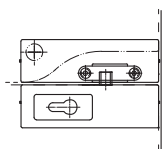
Drawing no. 91905-1-0112



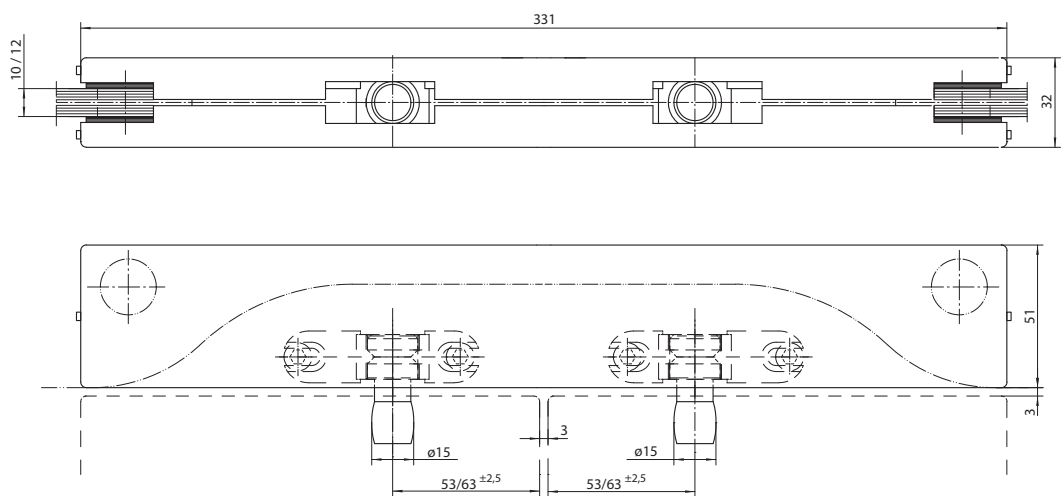
Blind insert IS-BLK



Backstop insert IS-BS



Flat-tapered insert IS-FS
 strike box to suit PL 50 RD



Glass machining, see drawing no. 91905-9-0957

ORDERING INFORMATION

Identification	Finish	ID no.
Double fanlight patch GEZE PT 75	stainless steel satin	127277
	stainless steel polished	127278
	anodised aluminium	135090
Blind insert IS-BLK	stainless steel satin	135349
	stainless steel polished	135106
	anodised aluminium	135350
Backstop insert IS-BS	steel	135105
Additional shim IL 75/20 for 8 mm glass		135144

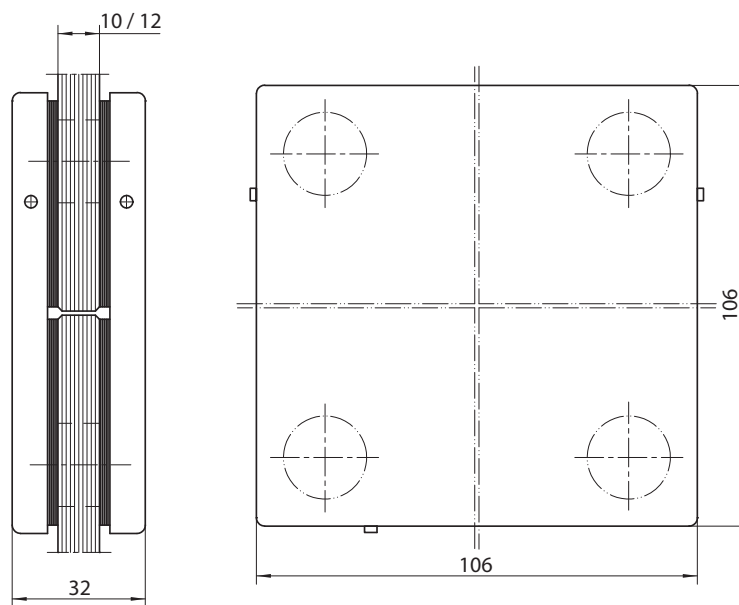
Connector patch GEZE PT 80

- connection (fourfold)
- surface made of anodised aluminium, stainless steel satin or polished

GEZE PT 80



Drawing no. 91905-1-0113



Glass machining, see drawing no. 91905-9-0958

ORDERING INFORMATION

Identification	Finish	ID no.
Connector patch GEZE PT 80	stainless steel satin	111473
	stainless steel polished	119891
	anodised aluminium	135091
Additional shim IL 80 for 8 mm glass		135145

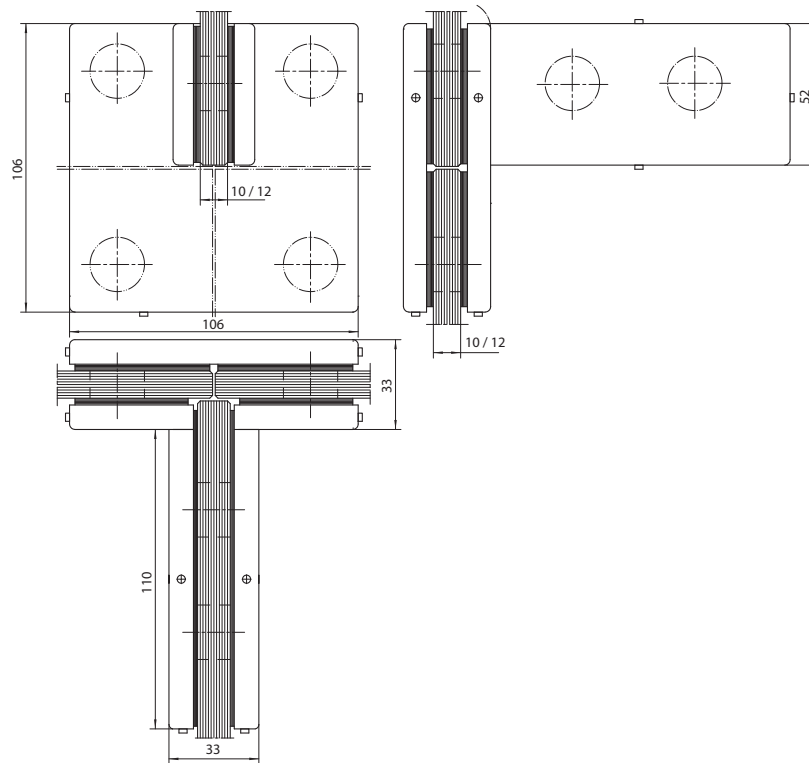
Connector patch with reinforcement GEZE PT 81

- connector patch with centre reinforcement
- surface made of anodised aluminium, stainless steel satin or polished

GEZE PT 81



Drawing no. 91905-1-0114



Glass machining, see drawing no. 91905-9-0959

ORDERING INFORMATION

Identification	Finish	ID no.
Connector patch with reinforcement GEZE PT 81	stainless steel satin	127230
	stainless steel polished	127275
	anodised aluminium	135092
Additional shim IL 81 for 8 mm glass		135146

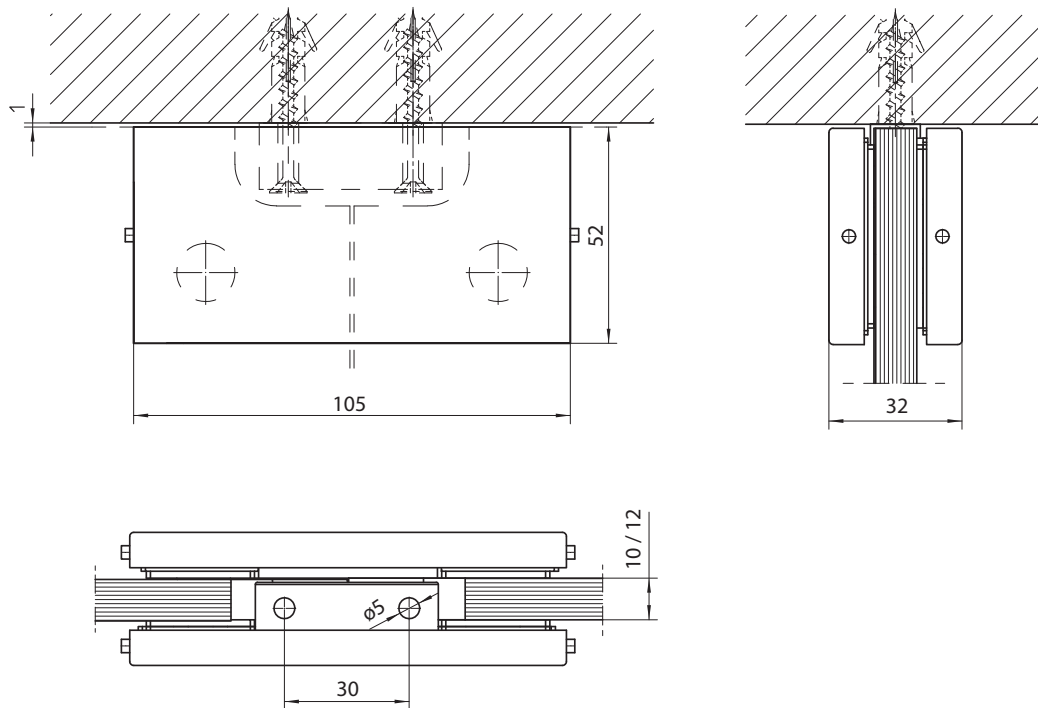
Connector patch for wall mounting GEZE PT 84

- glass/wall connection (twofold)
- surface made of anodised aluminium, stainless steel satin or polished

GEZE PT 84



Drawing no. 91905-1-0115



Glass machining, see drawing no. 91905-9-0960

ORDERING INFORMATION

Identification	Finish	ID no.
Connector patch for wall mouting GEZE PT 84	stainless steel satin	124164
	stainless steel polished	124165
	anodised aluminium	135093
Additional shim IL 84 for 8 mm glass		135147

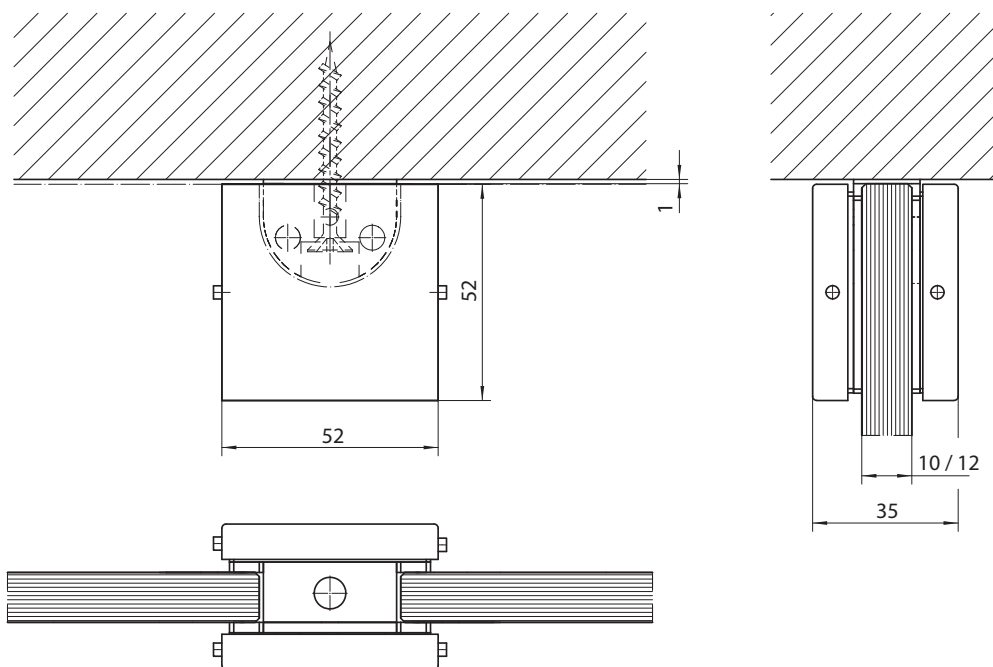
Connector patch for wall mounting GEZE PT 90

- glass/wall connection (simplex)
- surface made of anodised aluminium, stainless steel satin or polished

GEZE PT 90



Drawing no. 91905-1-0116



Glass machining, see drawing no. 91905-9-0961

ORDERING INFORMATION

Identification	Finish	ID no.
Connector patch for wall mounting GEZE PT 90	stainless steel satin	124162
	stainless steel polished	124163
	anodised aluminium	135094
Additional shim IL 90 for 8 mm glass		135148

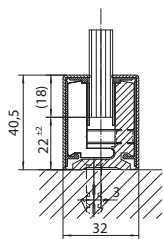
GEZE PATCH FITTINGS

Fixed panel profile GEZE FP

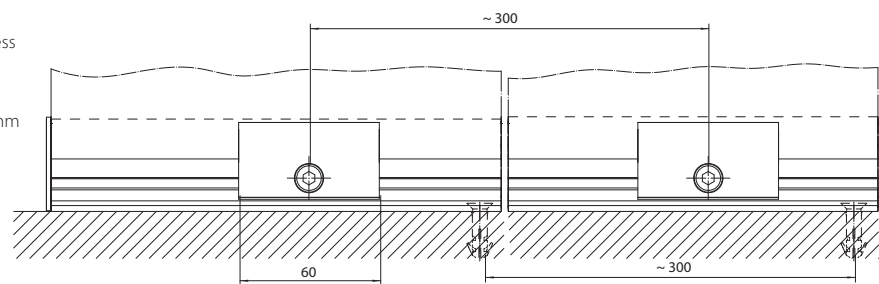
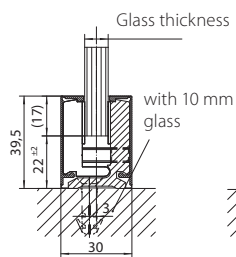
- fixed panel patch with cover profiles in anodised aluminium - length 6m - for 10 mm glass
- additional self-seal cover profiles and cover caps of stainless steel, satin or polished

GEZE FP**Drawing no. 91905-1-0125**

Section with
additional
bonded
stainless steel
cover profiles



Section with
aluminium
cover profiles

**ORDERING INFORMATION**

Identification	Finish	ID no.
Fixed panel profile GEZE FP	anodised aluminium	127218
Cover profile FP-C	stainless steel satin	127220
	stainless steel polished	127219
Cover cap EC	stainless steel satin	127232
	stainless steel polished	127231

GEZE products in combination with patch fittings

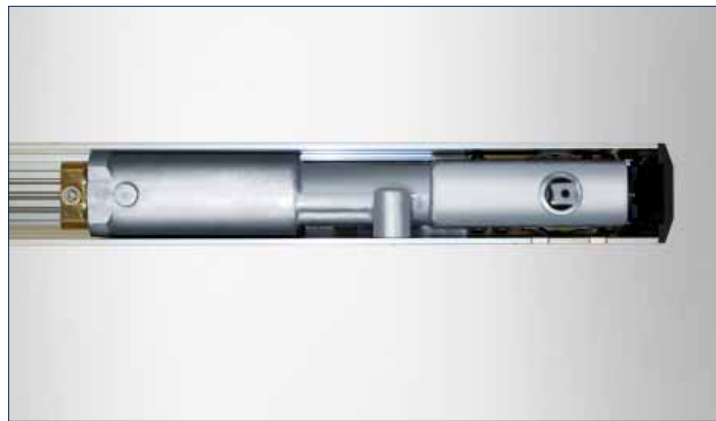
PENDULO C

Transparency and functionality

GEZE Pendulo C is a door rail with an integrated door closer. It protects the endangered lower glass edge of swing doors against damage and leads the moving leaf comfortably back into this position.

The profiles enable door leaf widths up to 1100 mm. Via the refined path of the door closer in the door rail, the partly disturbing floor mounted fixtures become redundant. The door can be pre-mounted comfortably in the workshop.

Only for the ground brackets and the upper pivot pins do simply drillings need to be undertaken at the building. Brackets and pivots can be easily and uncomplicatedly fitted. Afterwards the door can be simply hung and the closer is adjusted.



FLOOR SPRINGS

Diversity and reliability

The GEZE floor springs reliably and unobtrusively move single-action and double-action doors of any material.

The product range comprises systems for low as well as heavy leaf weights and door closers for the use with smoke and fire-proof doors. The floor springs for double-leaf doors contain an integrated closing sequence control or additionally an electromechanical hold-open device. The floor springs with lever and guide rail are used for doors with hinges.

By using the GEZE floor springs in combination with GEZE patch fittings it is also possible to build first-class double action glass doors in an easy and economical way, suitable for both commercial and private use.



The GEZE TS 500 NV and TS 500 N EN3 floor springs – small but perfectly formed

The exceptionally low overall height of only 42 mm is just one of the unmatched benefits of the TS 500 NV and TS 500 N EN3 floor springs for single action and double action doors. They are unobtrusive but the perfect choice for both new and retrofitted buildings. Their invisible method of functioning – even in all-glass doors – is also a great asset to small and medium-sized doors of up to 1100 mm and leaf weights of up to 150 kg. Used in conjunction with GEZE glass clamping fittings, they enable elegant and attractive all-glass double action doors to be installed in not only highly frequented buildings (such as office complexes), but also private residences. The longevity of the high-quality individual components has been proven in practice, with 500.000 closing and opening cycles performed without any signs of wear.

GEZE TS 500 NV / N EN3

low height of only 42 mm (plus 3 mm in use with PT10)



up to 150 kg leaf weight (100 kg with TS 500 N EN3)



closing force adjustable size 1-4 according to EN 1154 (TS 500 N EN3 with fixed size 3)



back check fixed



closing force adjustable



latching action adjustable (for TS 500 NV only)



optional hold-open device 85°, 90°, 105°, 120°



closing action from 175°

ORDERING INFORMATION

Identification	Finish	ID no.
GEZE TS 500 NV	without hold-open	102084
GEZE TS 500 N EN3	without hold-open	103086
	stainless steel satin	102127
Cover plates with screw accessories	dark bronze	103011
	satin brass	103012

The floor spring GEZE TS 550 NV – convenient and secure

The TS 550 NV offers comfort and elegance for double action and single action doors with leaf weights up to 300 kg. The invisible functionality is an incontestable advantage just for all-glass doors. Particularly when used with high frequented doors in foyers (f. ex. office buildings and hall entrances) its versatility and robustness become even more apparent.

GEZE TS 550 NV



slim installation height of only 54 mm (plus 3 mm in use with PT10)



interchangeable axle upper part for **door leaf weights up to 300 kg**



infinitely adjustable closing force EN3 to EN6



integrated back check to prevent hard shocks



individual **adjustable closing force**



adjustable latching action for secure closing



infinitely variable hydraulic hold-open between 80° and 165° und **integrated delayed closing action** against too rapid closing

ORDERING INFORMATION

Identification	Finish	ID no.
GEZE TS 550 NV		123950
Cover plates, reinforced to 1,5 mm material thickness	stainless steel satin	125888
	dark bronze	125890
	satin brass	125889

GEZE GmbH
P.O. Box 1363
71226 Leonberg
Germany

GEZE Service GmbH NL Südwest
 Reinhold-Vöster-Straße 25
 71229 Leonberg
 Tel. +49 (0) 7152-92 33 34

GEZE GmbH
Reinhold-Vöster-Straße 21-29
71229 Leonberg
Germany

GEZE Service GmbH NL Nord-Ost
 Bühringstraße 8
 13086 Berlin (Weissensee)
 Tel. +49 (0) 30-47 02 17 32

Telefon +49 (0) 7152-203-0
Telefax +49 (0) 7152-203-310

GEZE Service GmbH NL West
 Nordsternstraße 65
 45329 Essen
 Tel. +49 (0) 201-8 30 82 16

www.geze.com

Germany
 GEZE Sonderkonstruktionen GmbH
 Planken 1

GEZE Service GmbH NL Mitte
 Adenauerallee 2
 61440 Oberursel
 Tel. +49 (0) 6171-63 61 03

97944 Boxberg-Schweigern
 Tel. +49 (0) 7930-9294-0
 Fax +49 (0) 7930-9294-10
 E-Mail: sk.de@geze.com

GEZE Service GmbH NL Süd
 Keltnering 10
 85658 Eggening
 Tel. +49 (0) 8095-87 13 61

GEZE GmbH
 Niederlassung Nord/Ost
 Bühringstraße 8
 13086 Berlin (Weissensee)
 Tel. +49 (0) 30-47 89 90-0
 Fax +49 (0) 30-47 89 90-17
 E-Mail: berlin.de@geze.com

Austria
 GEZE Austria GmbH
 Mayrwiesstraße 12
 5300 Hallwang b. Salzburg
 Tel. +43-(0)662-663142
 Fax +43-(0)662-663142-15
 E-Mail: austria.at@geze.com

GEZE GmbH
 Niederlassung West
 Nordsternstraße 65
 45329 Essen
 Tel. +49 (0) 201-83082-0
 Fax +49 (0) 201-83082-20
 E-Mail: essen.de@geze.com

Baltic States
 GEZE GmbH Baltic States office
 Dzelzavas iela 120 S
 1021 Riga
 Tel. +371 (0) 67 89 60 35
 Fax +371 (0) 67 89 60 36
 E-Mail: office-latvia@geze.com

GEZE GmbH
 Niederlassung Mitte
 Adenauerallee 2
 61440 Oberursel (b. Frankfurt)
 Tel. +49 (0) 6171-63610-0
 Fax +49 (0) 6171-63610-1
 E-Mail: frankfurt.de@geze.com

Benelux
 GEZE Benelux B.V.
 Leemkuil 1
 Industrieterrein Kapelbeemd
 5626 EA Eindhoven
 Tel. +31-(0)40-26290-80
 Fax +31-(0)40-26 290-85
 E-Mail: benelux.nl@geze.com

GEZE GmbH
 Niederlassung Süd
 Reinhold-Vöster-Straße 21-29
 71229 Leonberg
 Tel. +49 (0) 7152-203-594
 Fax +49 (0) 7152-203-438
 E-Mail: leonberg.de@geze.com

Bulgaria
 GEZE Bulgaria - Trade
 Representative Office
 61 Pirinski Prohod, entrance „B“,
 4th floor, office 5,
 1680 Sofia
 Tel. +359 (0) 24 70 43 73
 Fax +359 (0) 24 70 62 62
 E-Mail: office-bulgaria@geze.com

China
 GEZE Industries (Tianjin) Co., Ltd.
 Shuangchenzhong Road
 Beichen Economic Development
 Area (BEDA)
 Tianjin 300400, P.R. China
 Tel. +86(0)22-26973995-0
 Fax +86(0)22-26972702
 E-Mail: Sales-info@geze.com.cn

GEZE Industries (Tianjin) Co., Ltd.
 Branch Office Shanghai
 Unit 25N, Cross Region Plaza
 No 899, Ling Ling Road,
 XuHui District
 200030 Shanghai, P.R. China
 Tel. +86 (0)21-523 40 960
 Fax +86 (0)21-644 72 007
 E-Mail: chinasales@geze.com.cn

GEZE Industries (Tianjin) Co., Ltd.
 Branch Office Guangzhou
 Room 17C3
 Everbright Bank Building, No.689
 Tian He Bei Road
 510630 Guangzhou
 P.R. China
 Tel. +86(0)20-38731842
 Fax +86(0)20-38731834
 E-Mail: chinasales@geze.com.cn

GEZE Industries (Tianjin) Co., Ltd.
 Branch Office Beijing
 Rm3A02, Building 3
 ZhuBang 2000 Business Plaza
 No.98, Balizhuang xili
 Chaoyang District
 100025 Beijing, P.R.China
 Tel. +86 (0)10-8797 5177 /-78
 Fax +86 (0)10-8797 5171
 E-Mail: chinasales@geze.com.cn

France
 GEZE France S.A.R.L.
 ZAC de l'Orme Rond
 RN 19
 77170 Servon
 Tel. +33-(0)1-606260-70
 Fax +33-(0)1-606260-71
 E-Mail: france.fr@geze.com

Hungary
 GEZE Hungary Kft.
 Bartók Béla út 105-113.
 Budapest
 H-1115
 Tel. +36 (1) 481 4670
 Fax +36 (1) 481 4671
 E-Mail: office-hungary@geze.com

Iberia
 GEZE Iberia S.R.L.
 Pol. Ind. El Pla
 C/Comerc, 2-22, Nave 12
 08980 Sant Feliu de Llobregat
 (Barcelona)
 Tel. +34(0)9-02194036
 Fax +34(0)9-02194035
 E-Mail: info@geze.es

India
 GEZE India Private Ltd.
 MF 2 & 3, Guindy Industrial Estate
 Ekkattuthangal
 Chennai 600 097
 Tamilnadu
 Tel. +91 44 3061 6900
 Fax +91 44 3061 6901
 E-Mail: office-india@geze.com

Italy
 GEZE Italia Srl
 Via Giotto, 4
 20040 Cambiago (MI)
 Tel. +3902950695-11
 Fax +3902950695-33
 E-Mail: italia.it@geze.com

GEZE Engineering Roma Srl
 Via Lucrezia Romana, 91
 00178 Roma
 Tel. +3906-7265311
 Fax +3906-72653136
 E-Mail: roma@geze.biz

Poland
 GEZE Polska Sp.z o.o.
 ul. Annapol 21
 03-236 Warszawa
 Tel. +48 (0)22 440 4 440
 Fax +48 (0)22 440 4 400
 E-Mail: geze.pl@geze.com

Romania
 GEZE GmbH Rezentantanta Romania
 Str. Ionescu Baican nr. 22
 RO-021835 Bucuresti, sector 2
 Tel. +40 (0) 21 25 07 750
 Fax +40 (0) 21 25 07 750
 E-Mail: office-romania@geze.com

Russian Federation
 GEZE GmbH Representative
 Office Russia
 Kolodesnij pereulok3, str. 25
 Office Nr. 5201-5203
 107076 Moskau
 Tel. +7 (0) 49 55 89 90 52
 Fax +7 (0) 49 55 89 90 51
 E-Mail: office-russia@geze.com

Scandinavia – Sweden
 GEZE Scandinavia AB
 Mallslingan 10
 Box 7060
 18711 Täby, Sweden
 Tel. +46(0)8-7323-400
 Fax +46(0)8-7323-499
 E-Mail: sverige.se@geze.com

Scandinavia – Norway
 GEZE Scandinavia AB avd. Norge
 Industriveien 34 B
 2073 Dal
 Tel. +47(0)639-57200
 Fax +47(0)639-57173
 E-Mail: norge.se@geze.com

Scandinavia – Finland
 Branch office of GEZE Scandinavia AB
 Herralantie 824
 Postbox 20
 15871 Hollola
 Tel. +358(0)10-4005100
 Fax +358(0)10-4005120
 E-Mail: finland.se@geze.com

Scandinavia – Denmark
 GEZE Danmark
 Branch office of GEZE Scandinavia AB
 Høje Taastrup Boulevard 53
 2630 Taastrup
 Tel. +45(0)46-323324
 Fax +45(0)46-323326
 E-Mail: danmark.se@geze.com

South Africa
 DCLSA Distributors (Pty.) Ltd.
 118 Richards Drive, Halfway House,
 Ext 111
 P.O. Box 7934, Midrand 1685
 Tel. +27(0)113158286
 Fax +27(0)113158261
 E-Mail: info@dclsa.co.za

Switzerland
 GEZE Schweiz AG
 Bodenackerstrasse 79
 4657 Dulliken
 Tel. +41-(0)62-2855400
 Fax +41-(0)62-2855401
 E-Mail: schweiz.ch@geze.com

Turkey
 GEZE GmbH Türkiye - Istanbul
 İrtibat Bürosu
 Ataşehir Bulvarı, Ata 2/3
 Plaza Kat: 9 D: 84 Ataşehir
 Kadıköy / Istanbul
 Tel. + 90 (0) 21 64 55 43 15
 Fax + 90 (0) 21 64 55 82 15
 E-Mail: office-turkey@geze.com

Ukraine
 Repräsentanz GEZE GmbH Ukraine
 ul. Vikentija Hvoyki, 21,
 office 151
 04080 Kiev
 Tel. +38 (0) 44 49 97 725
 Fax +38 (0) 44 49 97 725
 E-Mail: office-ukraine@geze.com

United Arab Emirates/GCC
 GEZE Middle East
 P.O. Box 17903
 Jebel Ali Free Zone
 Dubai
 Tel. +971(0)4-8833112
 Fax +971(0)4-8833240
 E-Mail: geze@emirates.net.ae

United Kingdom
 GEZE UK Ltd.
 Blenheim Way
 Fradley Park
 Lichfield
 Staffordshire WS13 8SY
 Tel. +44(0)1543443000
 Fax +44(0)1543443001
 E-Mail: info.uk@geze.com

GEZE REPRESENTATIVE